An architectural rendering of a building complex. The central focus is a large building with a vibrant red facade and a steeply pitched red roof. To its right is a larger, multi-story building with a light-colored wooden facade and a flat roof. The surrounding area includes a courtyard with trees and a grid-like structure, possibly a parking lot or a walkway. The overall style is modern and minimalist.

NORD  
ARCHITECTS  
COPENHAGEN

# NORD ARCHITECTS

Based in Copenhagen, Denmark.

Established in 2003.

Partners **Johannes Molander Pedersen**,  
**Morten Rask Gregersen** and **Mia Baarup Tofte**.

Scandinavian projects in healthcare,  
education, housing, urban development,  
culture and client consulting.

Project office for **The Housing Lab**  
since 2009.





# FROM CRADLE TO GRAVE

SCHOOL / EDUCATION



WORKPLACES



NURSING HOME



SENIOR HOUSING



HOSPICE



KINDERGARDEN



CULTURE / SPORTS



HEALTHCARE









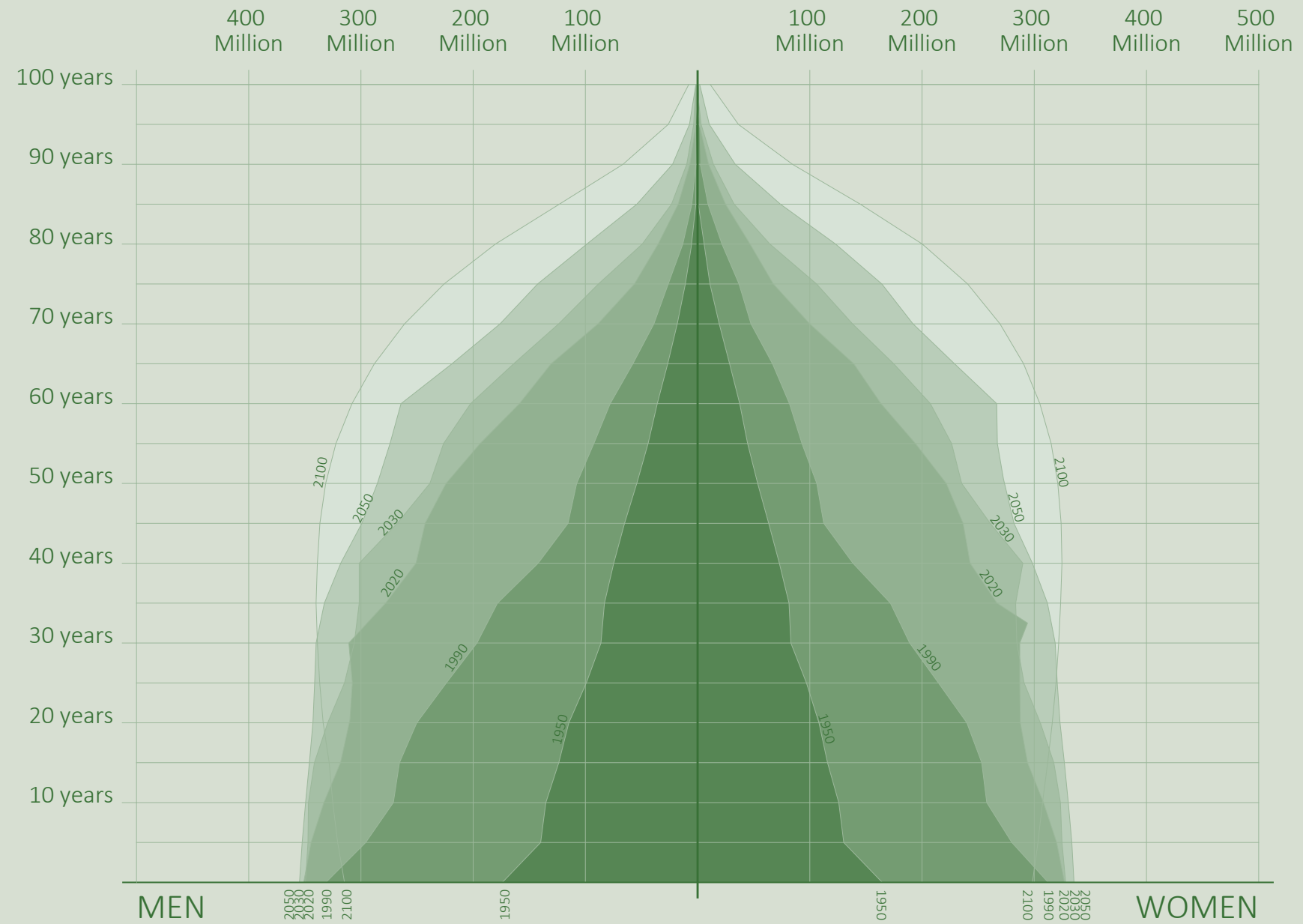


# THE VIKINGS



“IF YOU HAD TO BE REBORN ANYWHERE IN THE WORLD AS A PERSON WITH AVERAGE TALENTS AND INCOME, YOU WANT TO BE A VIKING”

# THE REVERSE POPULATION PYRAMID



We like to think of healthcare and housing non exclusively, and that a person does not only have two options: living at home or in an institution. Instead we work with urban residential projects that create new neighborhoods where generations can live side by side — and care facilities that are homes and/or villages rather than institutions.

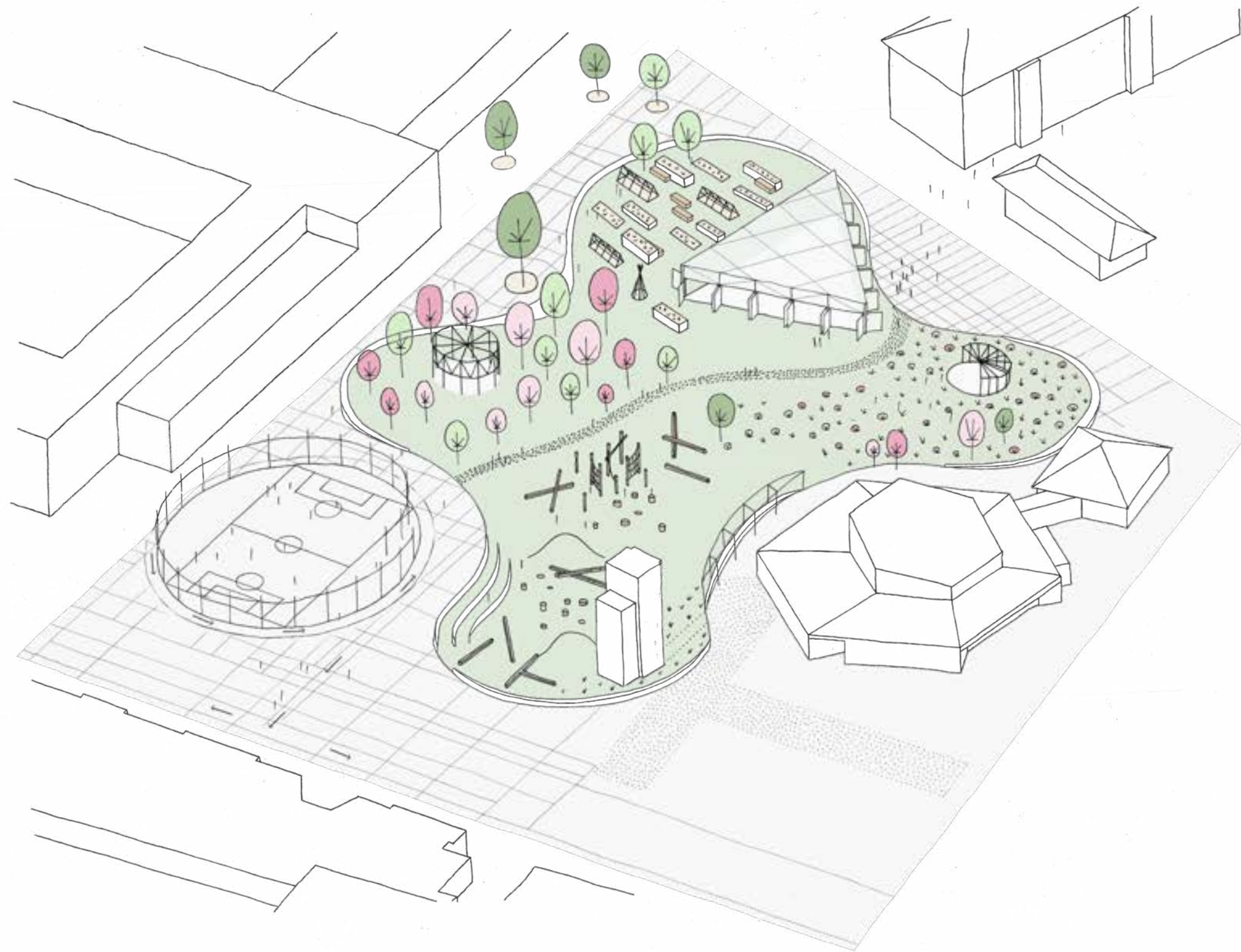


# SUSTAINABLE SENIOR COMMUNITY

Innovative housing project focusing on  
Nordic identity and shared spaces









ARCHITECTURE  
&  
HEALTHCARE



## PREVENTION

Through the choice of materials to urban planning that promotes physical activity

## TREATMENT

We design places for treatment with a homey atmosphere that addresses the human scale

## REHABILITATION

We design for interaction, shared knowledge and recovery that promote normal life activities



# SUPER HOSPITAL



HOSPICE



HEALTHCARE CENTER IRELAND



HEALTHY LIVING



HEALTHCARE CENTER NORWAY



HEALTHCARE CENTER DENMARK

# HOME TREATMENT



ALZHEIMERS CENTER



DIABETES CENTER



DEMENTIA & LIVING



# CENTERS OF EXCELLENCE



CANCER CENTER





# KATEGORIER AF SUNDHEDSBYGGERI



CENTRES OF EXCELLENCE

SUNDHEDSCENTRE

DEMENS LANDSBYER

# **FUNCTIONAL SYNERGIES**

...programmes, functions, users...

# ENTERING INTO A DIALOGUE WITH THE CITY

...context, urban space, added value...

# ACROSS SECTORS

...organisation, services, added value..

# HEALTH AND CANCER CENTER

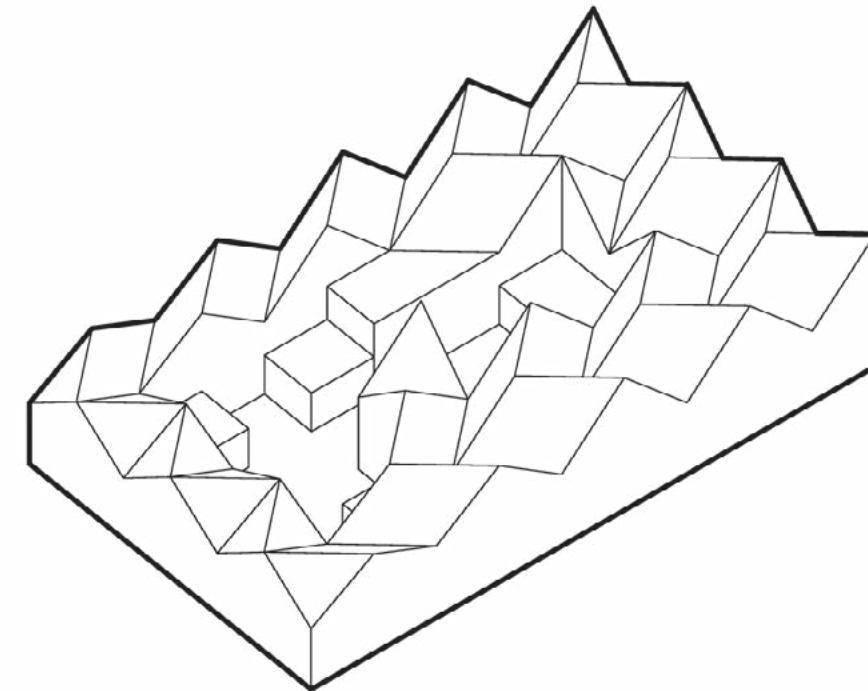
Innovative approach to health architecture in Copenhagen





# COPENHAGEN CANCER CENTER

Location	Copenhagen, Denmark
Client	Copenhagen Municipality
Year	2005-2011
Typology	Cancer and health care center
Size	2.200 m <sup>2</sup>
Collaborators	Wessberg
Status	Built















# HEALING ARCHITECTURE

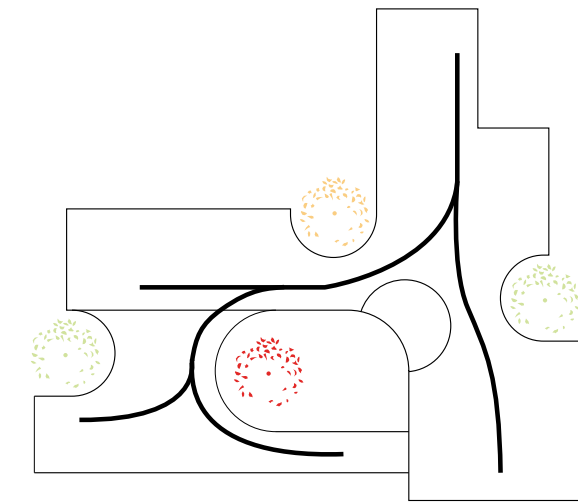
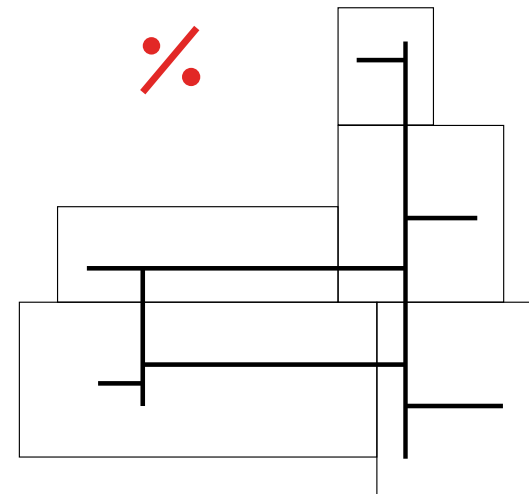
A new typology in a historic setting





# URBAN HOSPICE

Location	Frederiksberg, Denmark
Client	Diakonissestiftelsen
Year	Completed 2016
Typology	Hospice
Commission	Head consultant
Size	2,200 m <sup>2</sup>
Collaborators	MASU Planning, Rambøll
Status	Built







*"Nord Architects eases transition  
with a calming architectural  
language - and a warm and  
protecting atmosphere."*

*MARK MAGAZINE  
May 2017*

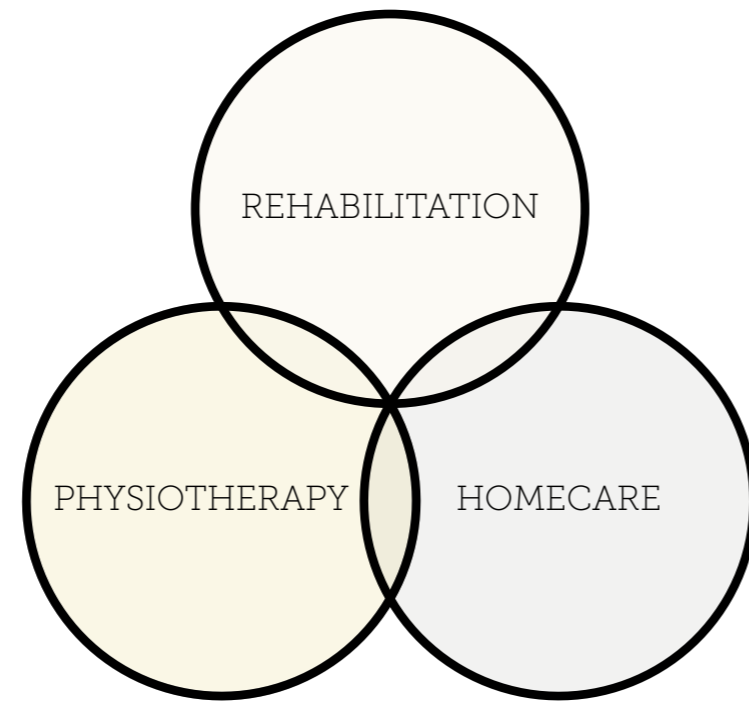




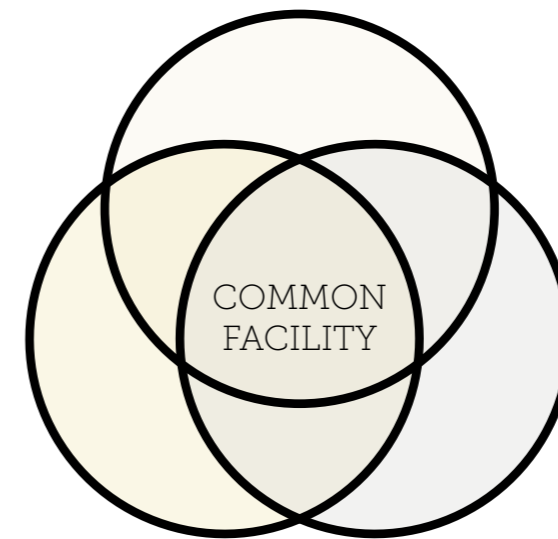


# HILLERØD HEALTHCARE CENTER





SYNERGY





CO-CREATION PROCESS



SKETCH DESIGN



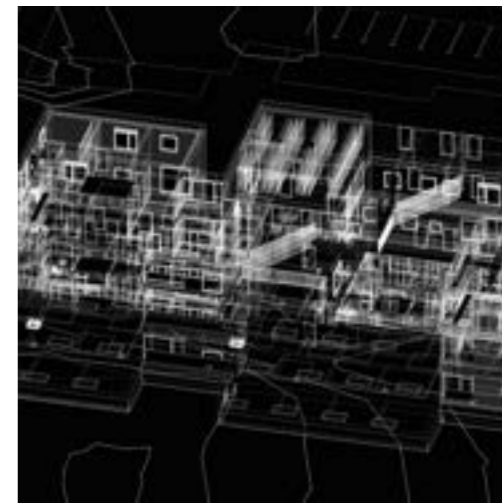
DESIGN DEVELOPMENT



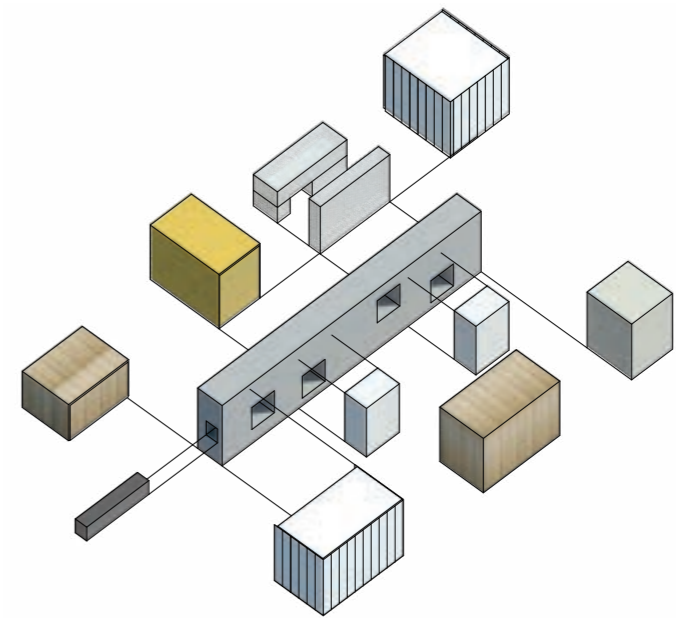
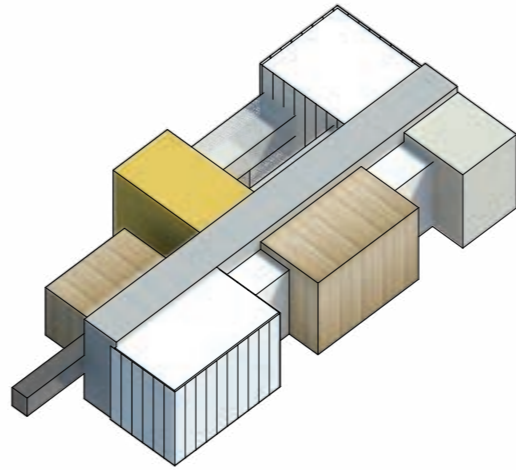
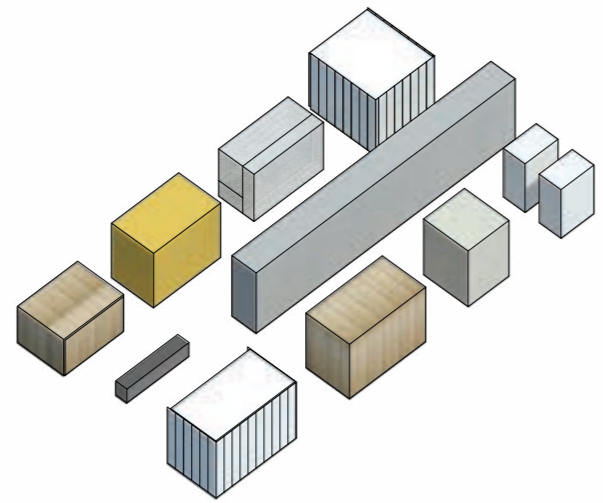
PROJECT PROPOSITION



AUTHORITY



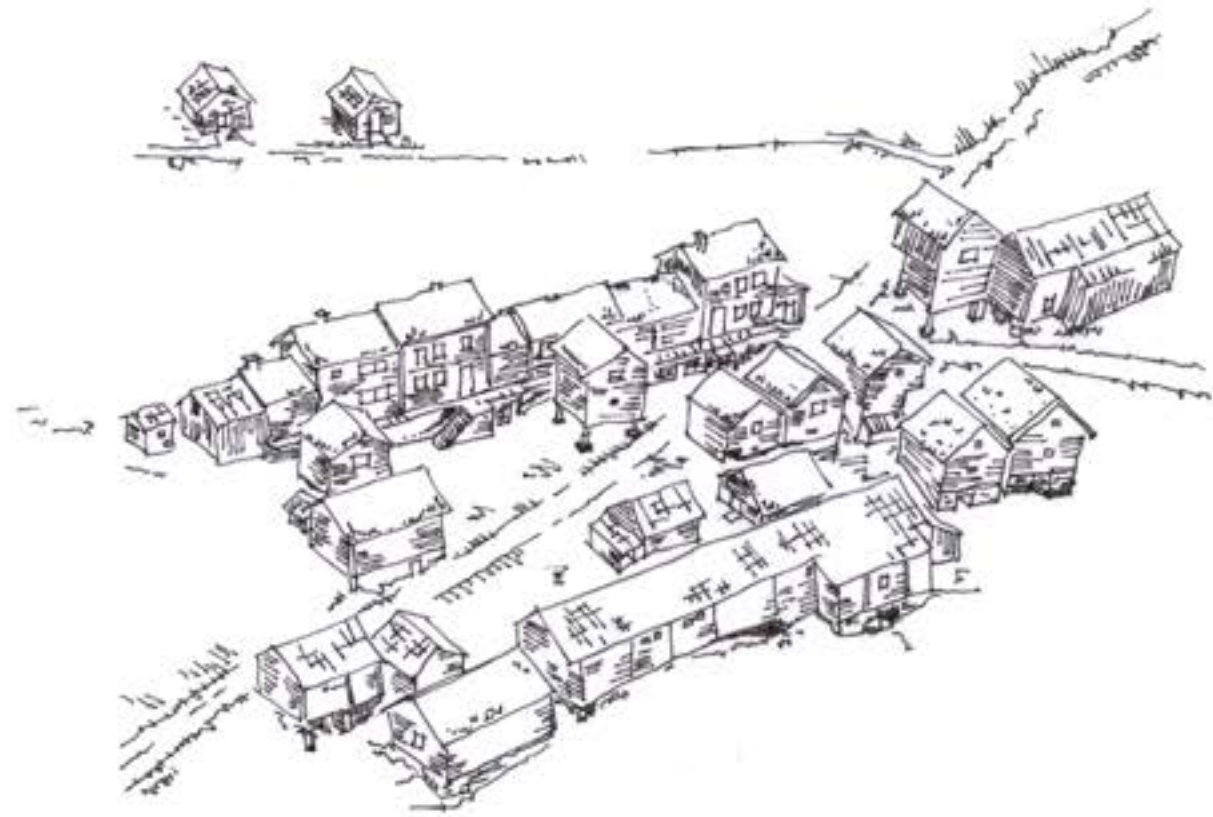
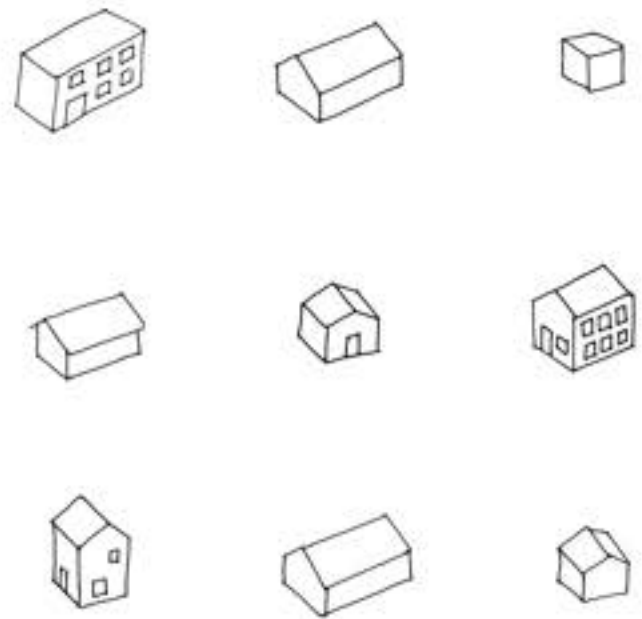
DOCUMENTATION





RANDABERG  
PLEJECENTER OG  
BOTILBUD















## ALZHEIMER'S VILLAGE

Frankrigs første demenslandsby, bygget på inkluderende fællesskaber og beboernes præmisser

Sted Dax, Frankrig Bygherre Département des Landes År 2016-20

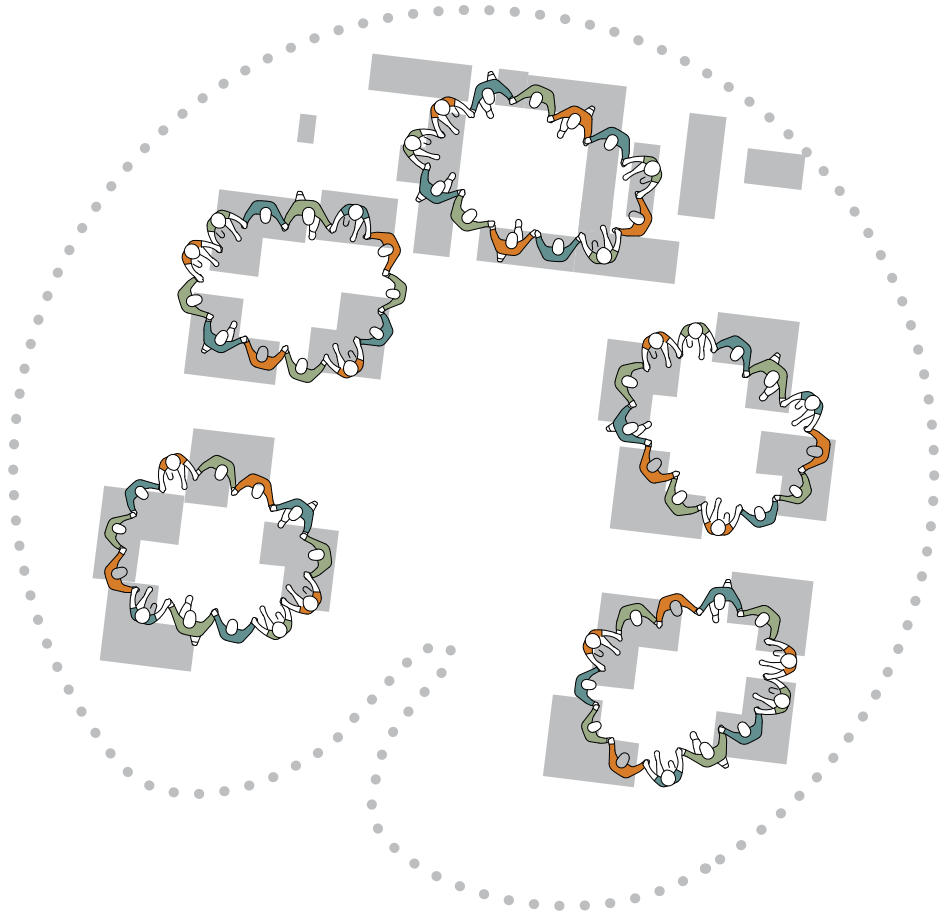
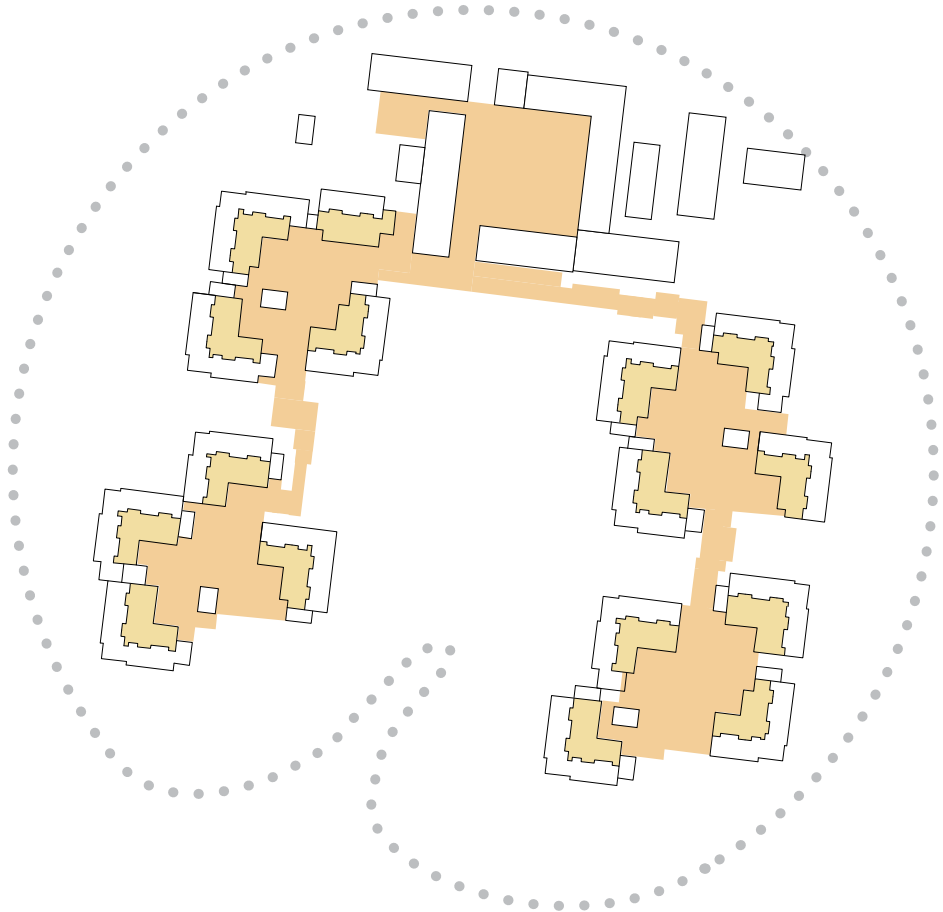
Typologi Demensplejehjem, sundhedcenter Størrelse 10.700 m<sup>2</sup>

Samarbejdspartner Champagnat & Gregoire, Groupe Cauros

Status Opført



Public space

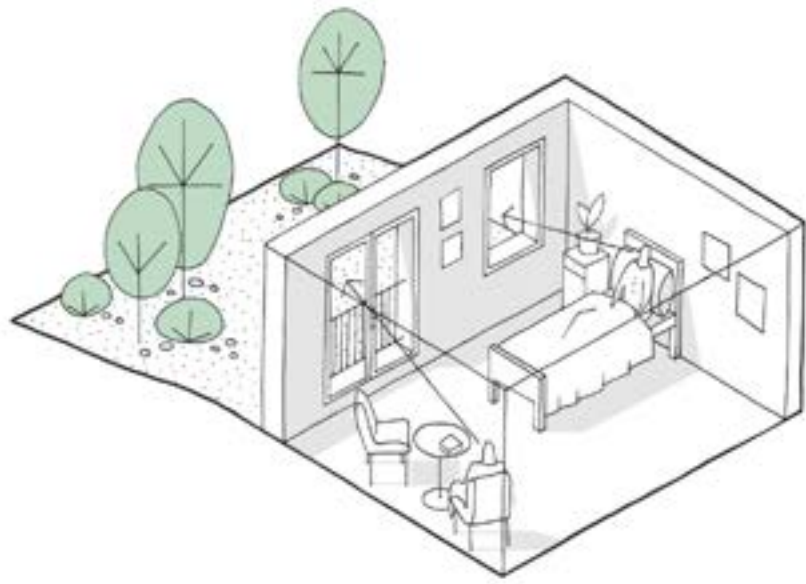
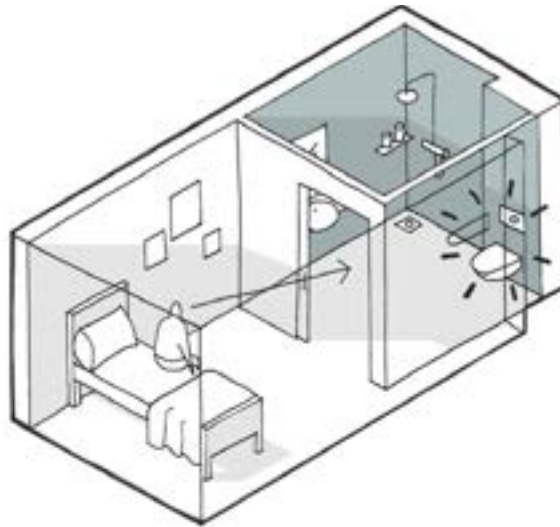
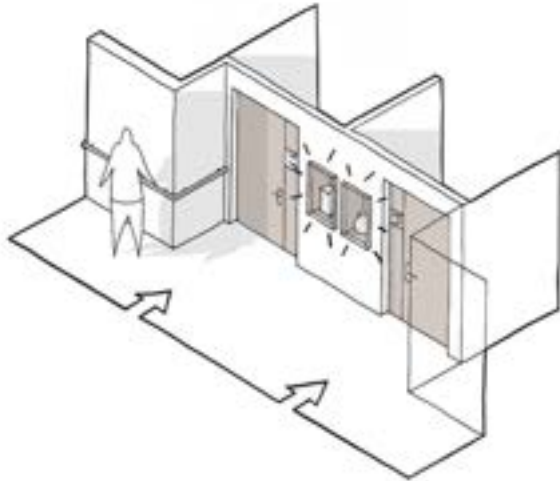




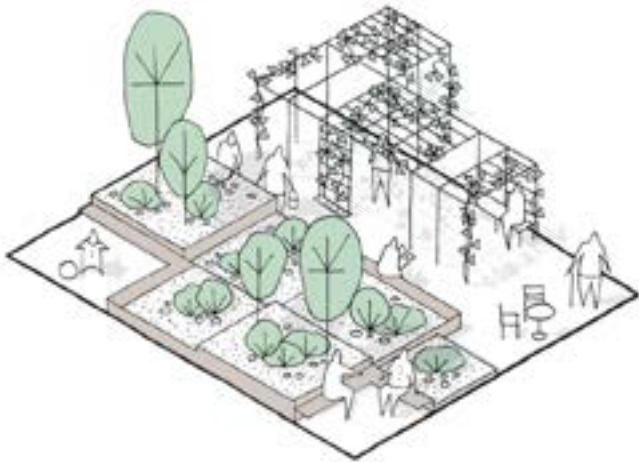
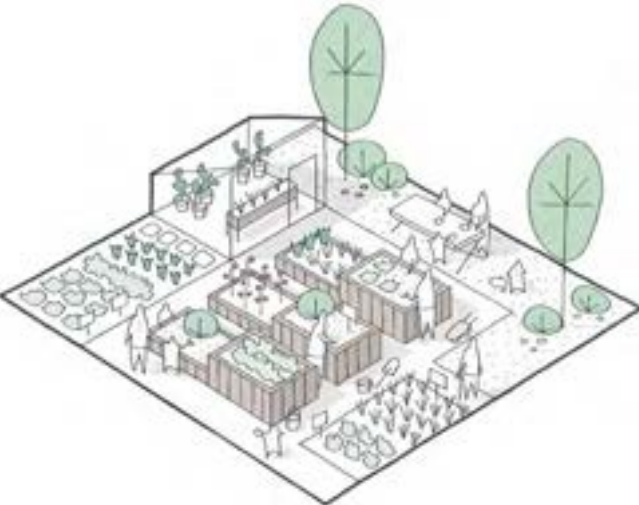




Wayfinding and views



Gardens

















## LYNGDAL PLEJECENTER

En fornyelse af plejecentertypologien og et værdifuldt bidrag til byens udvikling

Sted Lyngdal, Norge Bygherre Lyngdal Kommune  
År 2016-20 Typologi Plejehjem Størrelse 12.700 m<sup>2</sup>  
Samarbejdspartnere 3RW Status 1. præmie i konkurrence. Opført



ETASJE



4 ETASJE



ETASJE



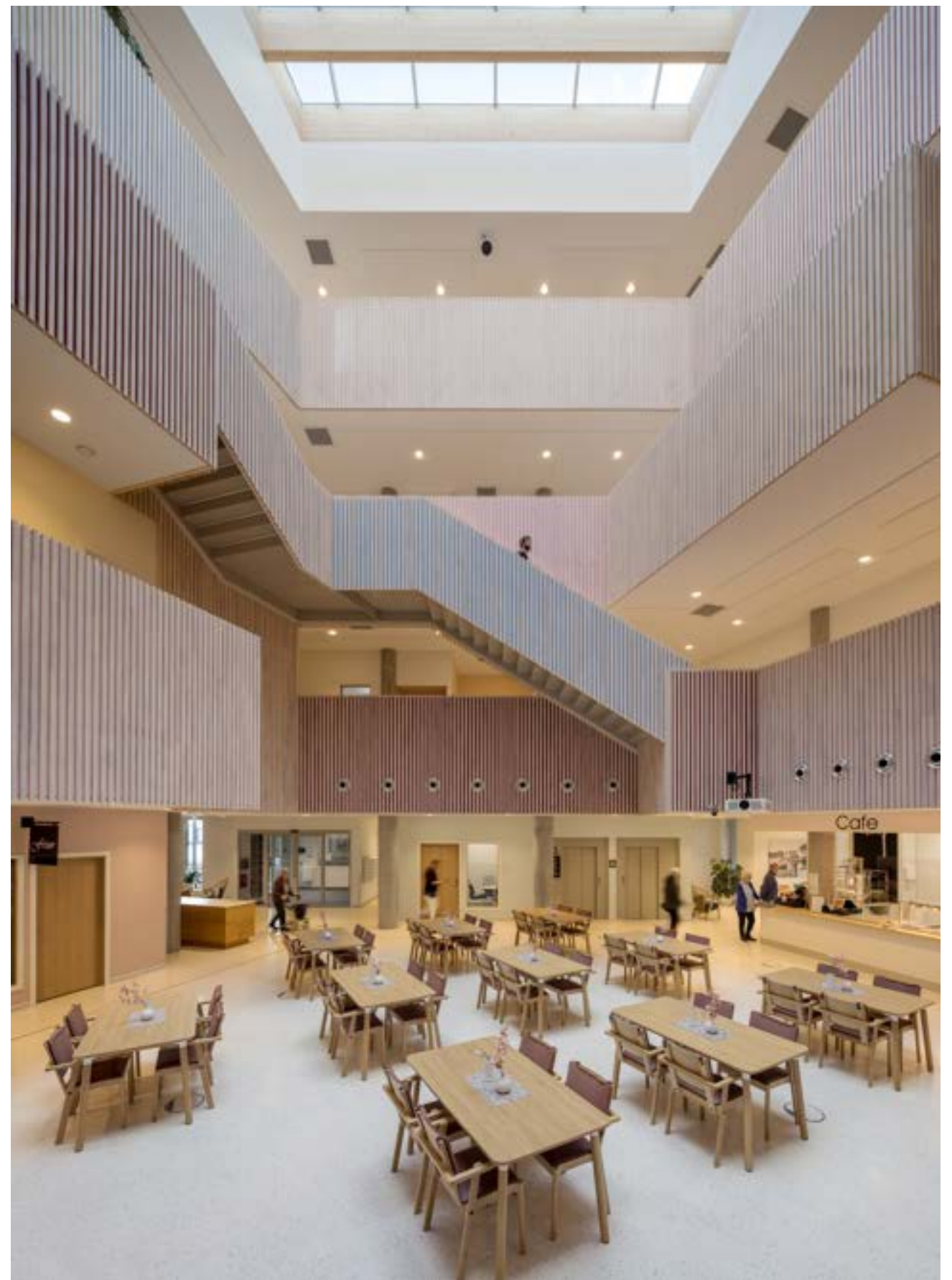
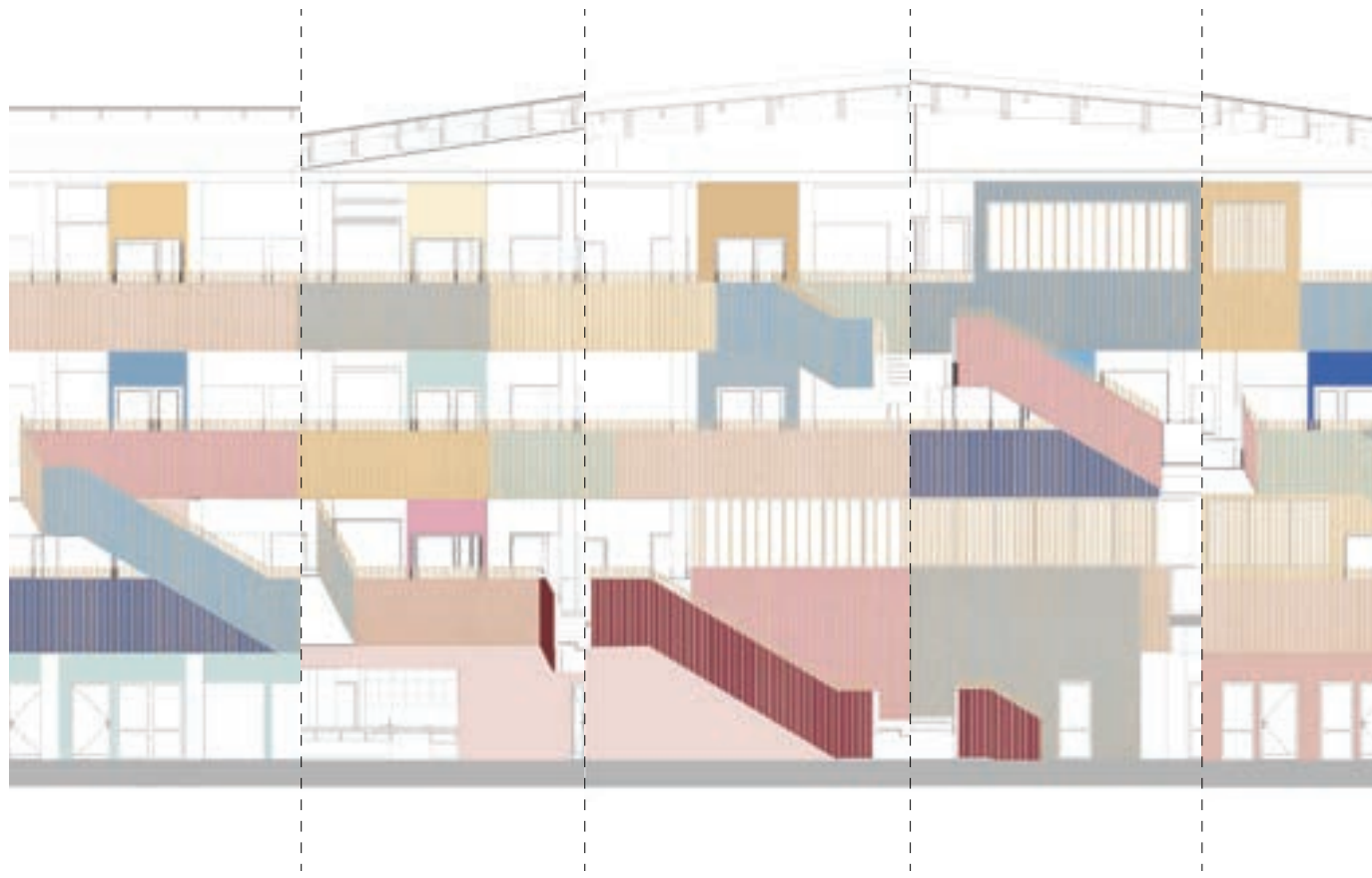
3 ETASJE

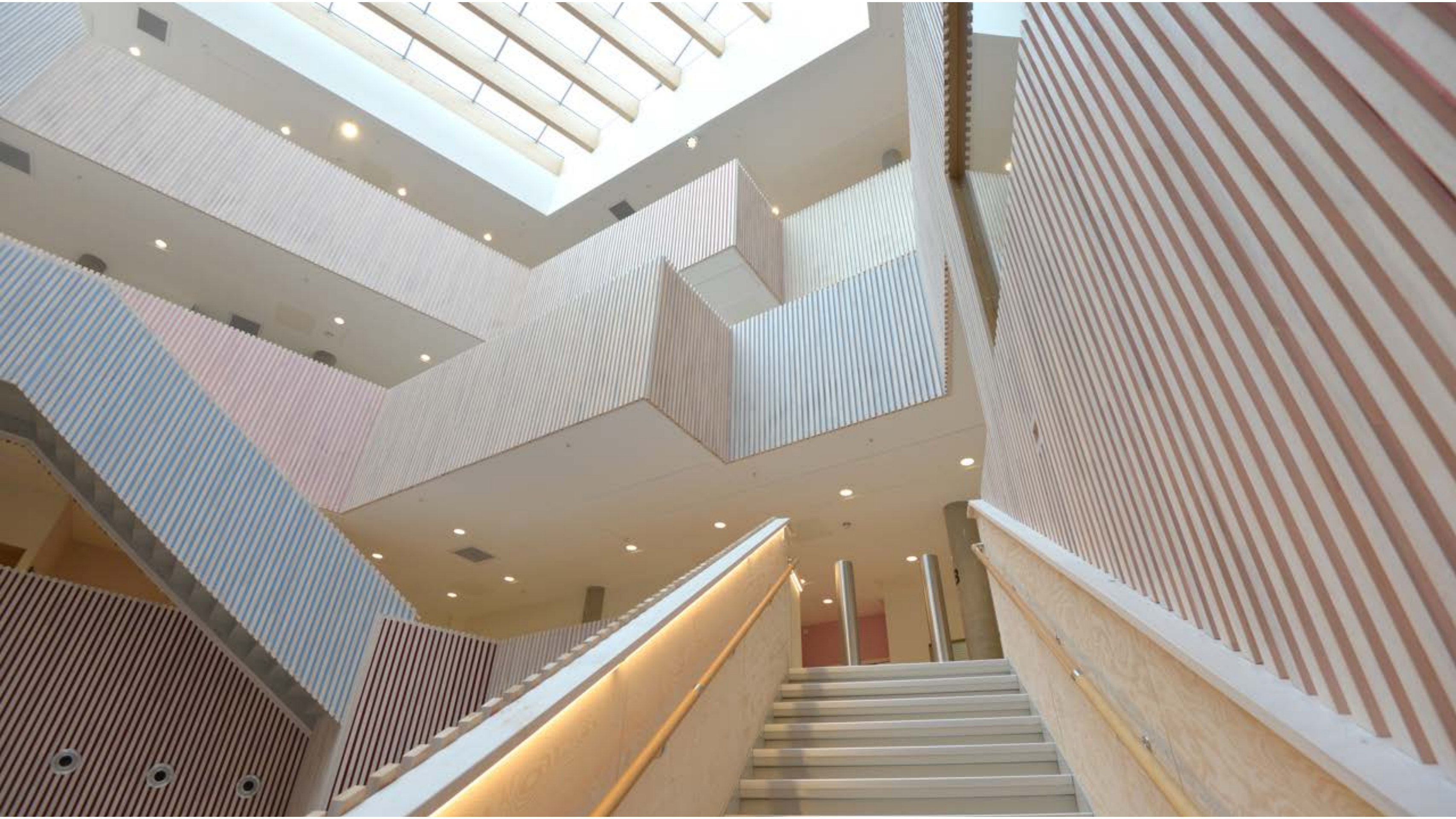


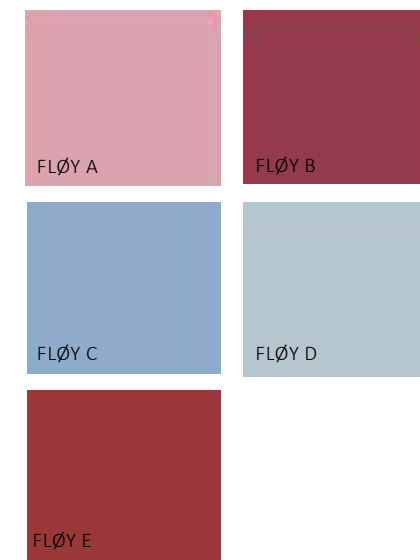
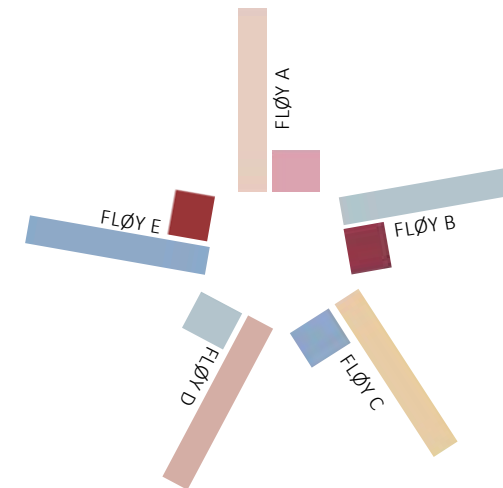












FARGER INNGANG FLØYER



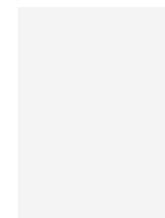


Lerketre- lameller 45 x 70  
Avstand 550 mm

Lerketre- lameller 45 x 60  
Avstand 200 mm

Lerketre- lameller 45 x 45  
Avstand 100mm

Lerketre- lameller 80 x 200  
Avstand 50 mm



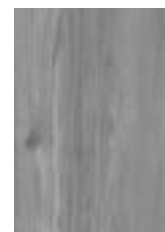
Fasadeplate  
ABET LAMINATI 819



Aluminiums inndekning  
tværrprofil



Vinduer - Ny Spolv (HAI)



Lærk lameller 80 x 200



Lærk paneler 19mm



## FURUSET HAGEBY

Et demensplejehjem og FutureBuilt projekt, der skal vise vejen for bæredygtig byudvikling og fremtidens omsorg.

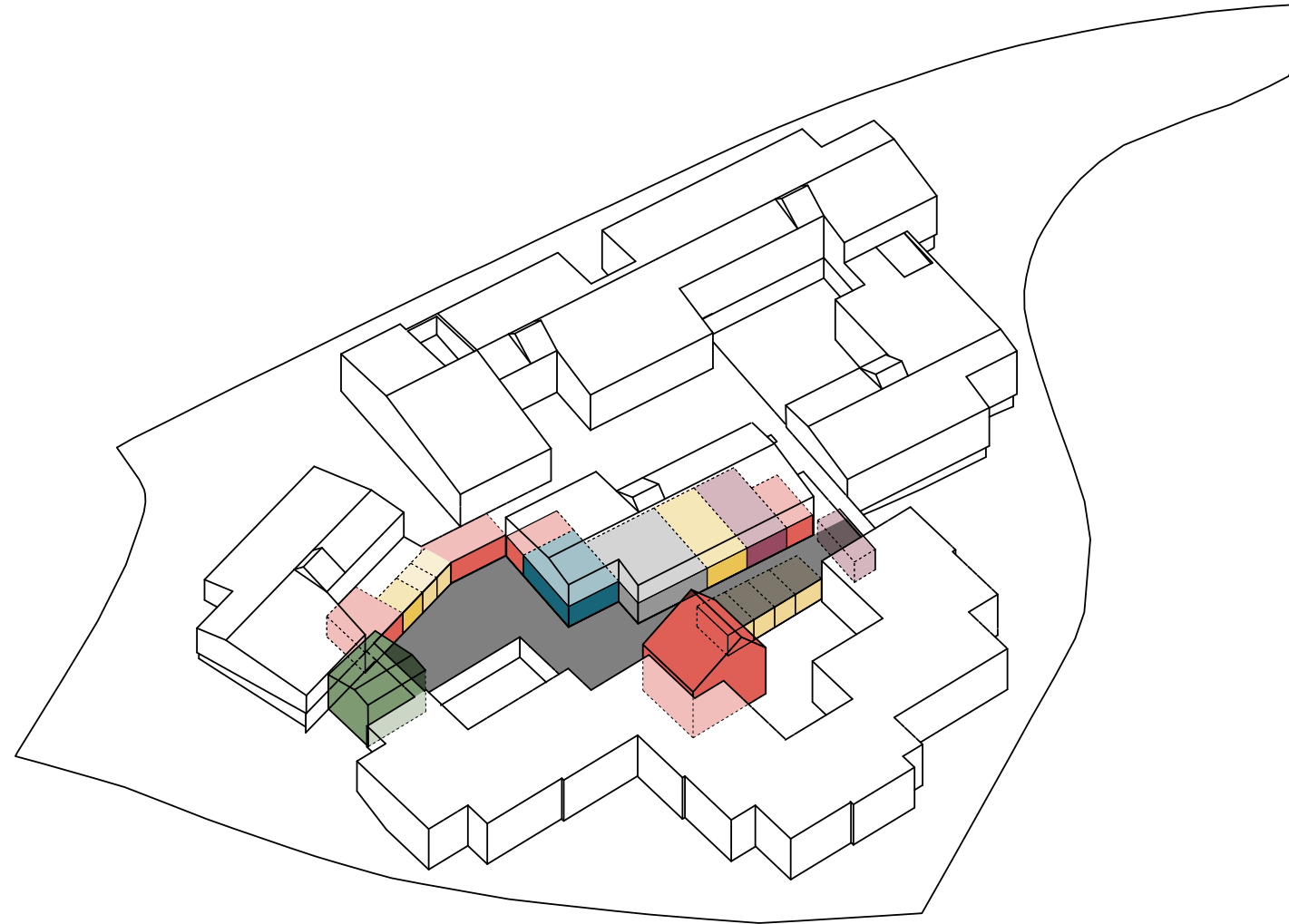
Sted Oslo, Norway Bygherre Oslo Kommune, Omsorgsbygg Oslo  
År 2018-22 (forventet) Typologi Plejehjem Størrelse 11.500 m<sup>2</sup>  
Samarbejdspartnere 3RW, Christian Mong  
Status 1. præmie i konkurrence. Byggeriet er under opførelse







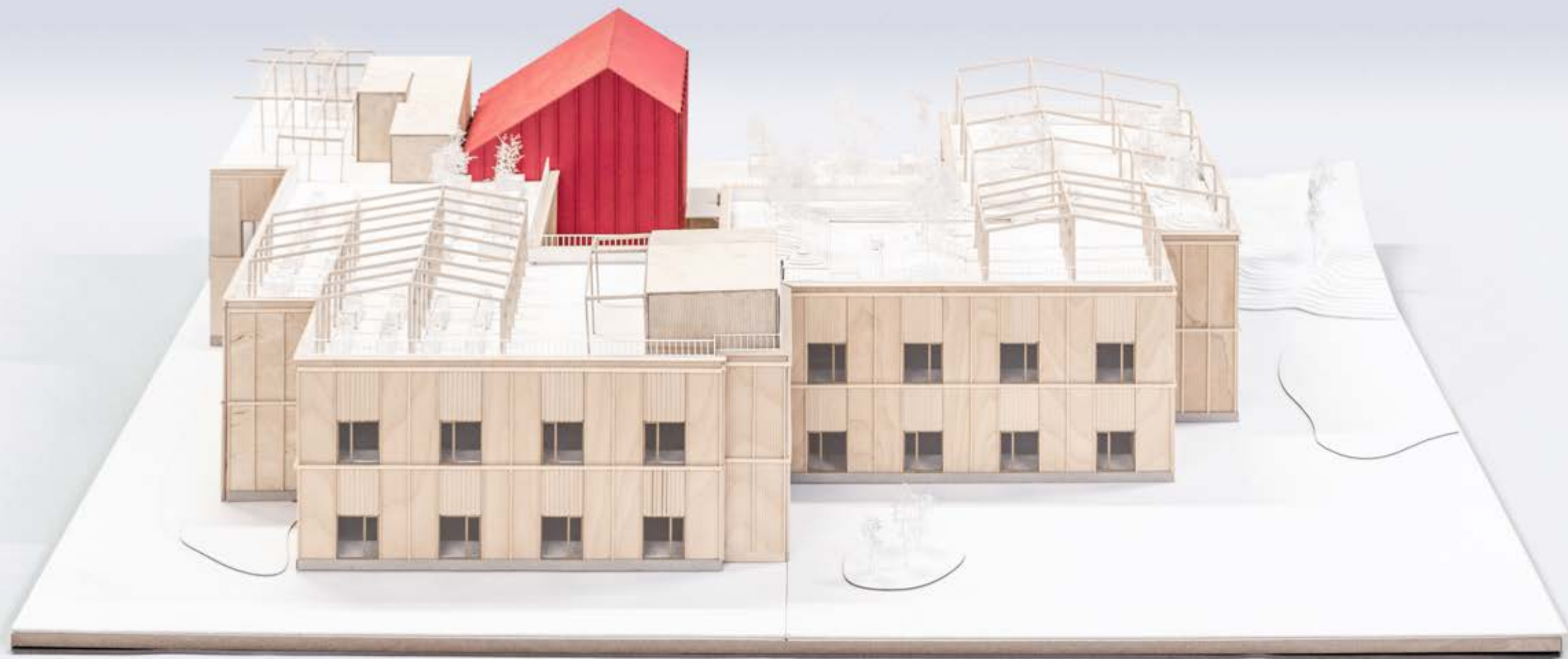
A pedestrian street with a restaurant, shops, hairdresser etc. is centrally located in the village



# The green loop - unviersal access











## BYEN FOR LIVET

Tværgenerationelle boliger i et bæredygtigt område.  
Høj grad af diversitet blandt boligtypologier, beboere,  
aldre, institutioner og aktiviteter.

Sted Odense Bygherre OK Fonden År 2017-19  
Typologi Masterplan for blandede boliger  
Rolle Totalrådgiver  
Størrelse 35.000 m<sup>2</sup> Samarbejdspartnere UHA  
Status Afsluttet

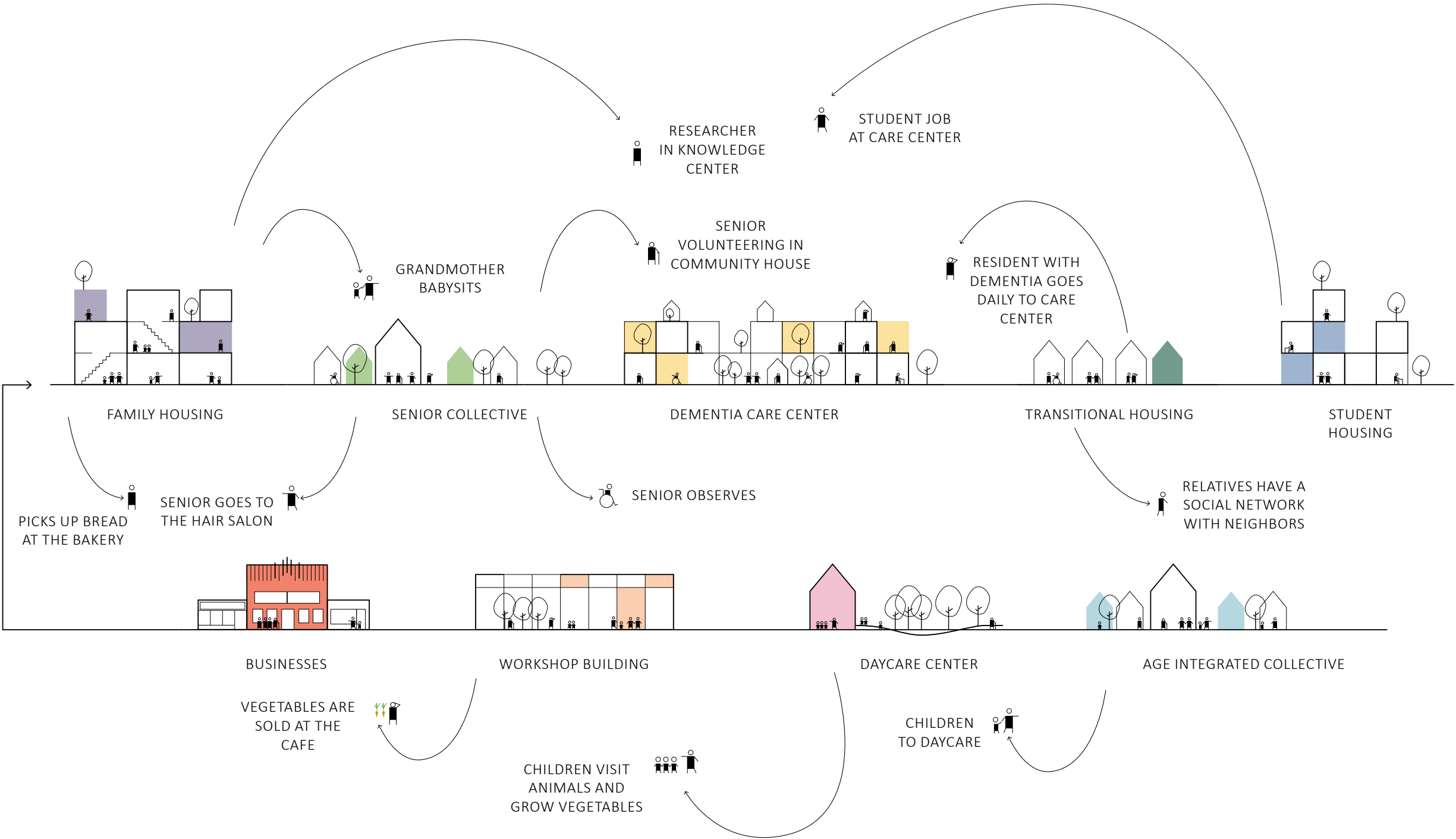




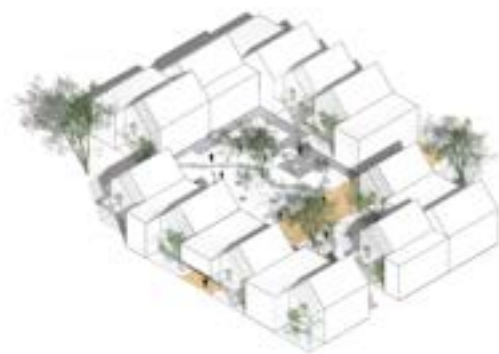




# ALDERS INTEGRERET BY









# TAK!

[WWW.NORDARCHITECTS.DK](http://WWW.NORDARCHITECTS.DK)

